

July 30, 2019

Table 1: Mineralized Au g/t intervals of TAP-AB3 - 2019 Drill holes (71.2% - 2 drill holes to be analyzed)

Hole ID	From	To	Interval*	Au g/t
19TABDD001	127.00	140.55	13.55	15.352
	Incl: 127.65	133.00	5.35	30.94
	153.00	167.00	14.00	3.143
19TABDD002	170	171.75	1.75	1.200
	127.65	134.00	6.35	3.461
19TABDD003	143.00	155.09	12.09	3.238
	14.00	17.00	3.00	0.790
19TABDD004	97.00	109.00	12.00	3.045
	139.60	150.60	11.00	3.719
19TABDD005	75.00	83.00	8.00	0.670
	153.00	159.00	6.00	5.453
19TABDD007	108.40	116.00	7.60	4.741
	124.00	146.00	22.00	7.680
19TABDD008	142.00	154.00	12.00	2.366
19TABDD009	104.00	158.00	54.00	2.697
	171.00	183.00	12.00	1.204
19TABDD010	129.00	154.5	25.50	13.000
	Incl: 130.00	135.00	5.00	63.398
	160.00	174.00	14.00	1.581

*Drill holes crossing subvertical ore lodes at dip angle 50-60°. True width is estimated at 70 to 95% of drilled interval
 Results for drills holes 19TABDD006 and 19TABDD012 are pending. Drill hole 19TABDD0011 was unmineralized.

Table 2: List of Collar - 12 Drill holes performed in 2019

Hole ID	X Coord	Y Coord	Z Coord	Azimuth	Dip	Length	Samples	Status
19TABDD001	402,367.39	94,873.66	140.88	291	-53	199.50	65	Assays OK
19TABDD002	402,371.44	94,849.92	140.88	270	-56	191.90	81	Assays OK
19TABDD003	402,253.60	94,625.00	131.20	90	-59	140.10	106	Assays OK
19TABDD004	402,368.72	94,875.06	142.03	270	-61	246.43	29	Assays OK
19TABDD005	402,236.44	94,649.96	133.34	90	-63	188.80	45	Assays OK
19TABDD006	402,223.16	94,675.04	135.26	90	-57	200.65	80	Samples at lab
19TABDD007	402,368.51	94,874.99	142.00	270	-53	197.00	47	Assays OK
19TABDD008	402,375.68	94,824.96	140.16	270	-55	221.30	44	Assays OK
19TABDD009	402,211.75	94,699.98	137.44	90	-57	225.30	83	Assays OK
19TABDD010	402,354.28	94,974.81	156.73	240	-52	194.30	157	Assays OK
19TABDD011	402,374.37	94,824.78	140.29	240	-55	162.75	19	Assays OK – No Ore
19TABDD012	402,352.60	94,990.01	157.02	270	-60	240.40	193	Samples at lab
Total				12 drill holes		2,408.43	949	71.2% Assays OK

Notes:

 Coordinates: UTM - 22N Zone; SAD69 Datum
 Azimuth and Dip related to Collar.



Figure 1: Location Map of 12 Drill holes performed in 2019 of AB3 Mine

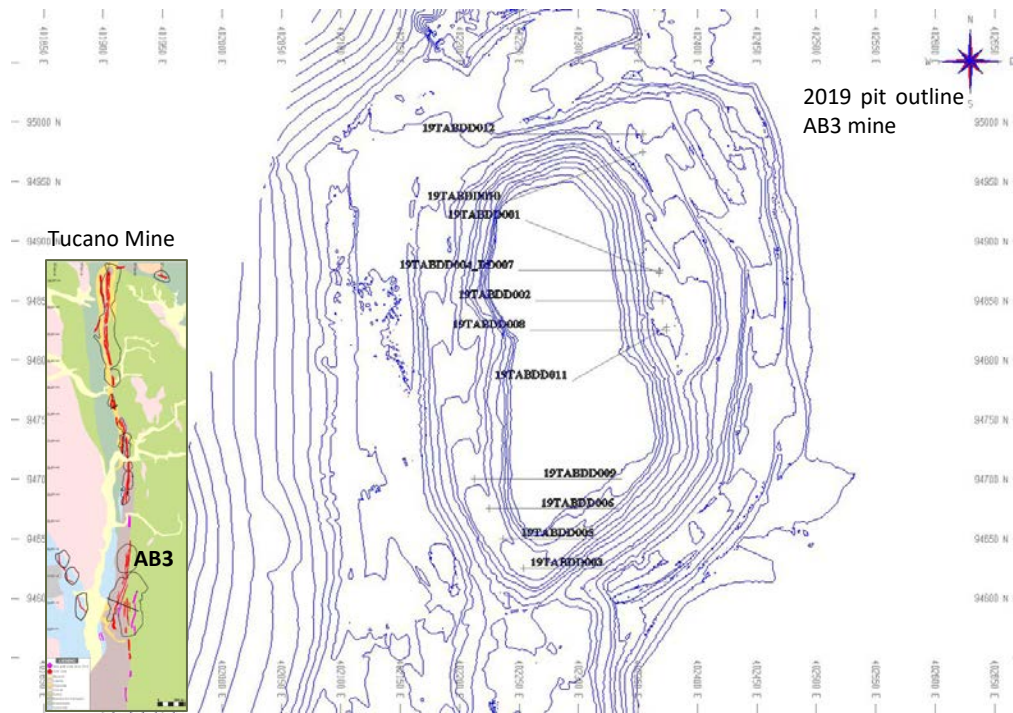


Figure 2: West-East Vertical section at UTM 94630 shown results of 19TABDD003 at southern TAP AB extension of the Mine. There is a 12 metre intercept representing potential depth extension below the existing pit.

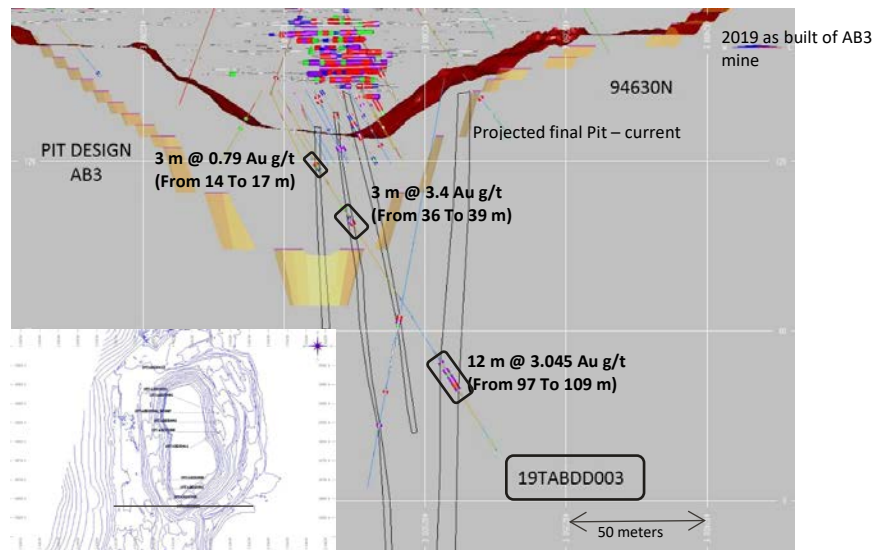




Figure 3: West-East Vertical section at UTM 94850 shown results of 19TABDD002 at central portion of TAP AB Mine. There is a 27.44 metre intercept with mineralization at the bottom of the pit (no prior data).

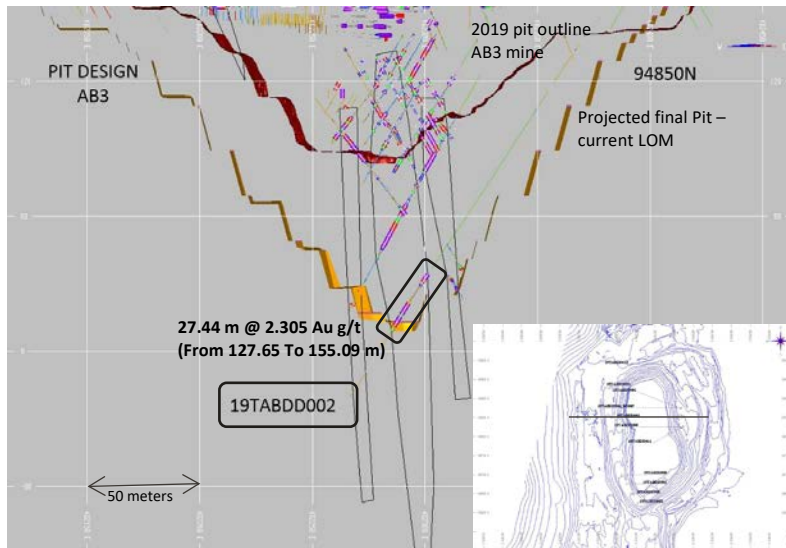


Figure 4: West-East Vertical section at UTM 94910 shown results of 19TABDD001 at northern extension of TAP AB Mine. There is a 13.55 metre intercept with mineralization at the bottom of the pit and a further 18.75 metre extension below the pit.

